

GPU Lite 70

The Safest Energy to Fly

The GPU Lite 70 is a device developed by **ENERCRAFT** to allow energy supply for a long time, mainly for aircraft maintenance or operational purposes, working as a continuous service power source. The equipment must be plugged in (AC cable) to a properly grounded outlet, and connected to the aircraft through the external DC power connector.

All of the **ENERCRAFT** GPUs Lite are equipped with Switching Power Supplies, which feature higher efficiencies, lighter weight, longer hold up times, and the ability to handle wider input voltage ranges.



MAIN SPECIFICATIONS OF THE GPU Lite 70

AC INPUT	Single Phase 90-264 Vac, Freq. 47/63 Hz
DC OUTPUT	28.5 ± 0.5 Volts 70 Amp Nominal, 80 Amp Maximum
TEMPERATURE RANGE	- 20° C ↔ 60° C
DIMENSIONS	401 mm x 307 mm x 173 mm
WEIGHT	9 kg (including cable and AN2551)
CABLE	1.5 mts Standard 3 PINS NATO AN2551 (35mm ²)
PROTECTION	Electronic sensors & Fuses
COOLING	Cooling air system integrated into the equipment

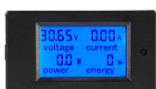
MAIN FEATURES

1 Incorporates the latest technology



ENERCRAFT innovative design
The most disruptive Ground Power Unit
Clean energy. Free of noise (ripple)
Accurate diagnosis
The most reliable components
Overvoltage, Overtemperature and Overload protections
Compact and portable

2 Full data display



Voltage
Output current

3 Protective Case



Reliable waterproofing (IP67 & IEC 60529)
NANUK®'s latching system (MIL-STD-810F)
Impact resistant (ATA Specification 300)
Robust (ASTM D4169 DC-18)

4 Portable equipment



Lightweight unit
One-handed operation
Spring loaded handle
Reinforced metal padlock holes



ENERCRAFT INNOVATIVE ELECTRIFICATION TECHNOLOGY S.L.
Cambados, Pontevedra – GALICIA, SPAIN / VAT: ESB02707628

©ENERCRAFT - ALL RIGHTS RESERVED
More information: www.enercraft.eu